

Right-of-Way Acquisition and Relocation Information

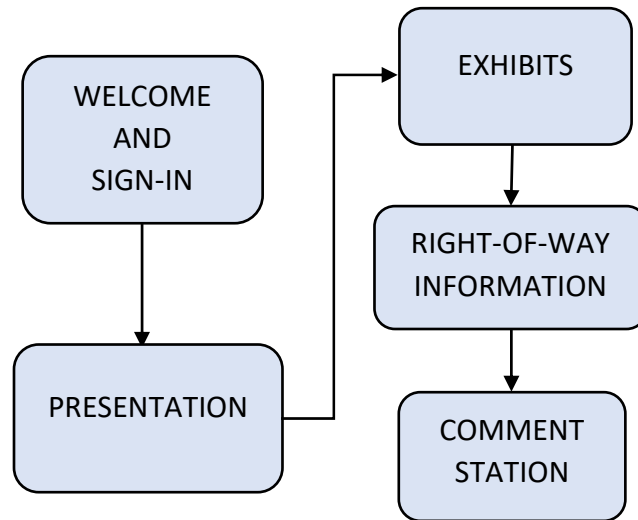
Right of way will be required for this project. The LADOTD has an Acquisition of Right of Way and Relocation Assistance Program. Information on this program can be obtained from the LADOTD Real Estate Section at the Right-of-way information station. If you have any questions regarding your individual situation, please speak with an LADOTD District 04 Real Estate Office Representative during the public meeting.

“The Road Ahead” – Anticipated Next Efforts

- Determine a preferred course of action considering the alternatives as shown and comments received this evening.
- Complete engineering and environmental studies (as may be required) of the preferred concepts.
- Secure funding as these proposed improvements are not currently funded.
- Acquire additional right-of-way supporting the construction of the preferred concepts.

The information presented today represents a conceptual plan. The build alternatives as presented may be modified and other alternatives may be developed for consideration.

Public Meeting Information Stations



Meeting Station Checklist

- Station 1: Sign In Table
Welcome! Please sign in and pick up a copy of meeting handouts.
- Station 2: Presentation
Continuous presentation about the proposed project.
- Station 3: Exhibits
Visit with team members and view exhibits of the proposed project.
- Station 4: Right-of-Way
Visit with LADOTD Real Estate Section.
- Station 5: Comment Table
Please provide comments. See instructions below.

Please leave your comments - Your input is important to us!

Verbal Comments: will be documented at the comment station

Written Comments: can be turned in today at the comment station or post marked and mailed within ten calendar days following this meeting **(by 04/10/2022)** to ensure that your comments become part of the official meeting record



Thank you for taking the time out of your day to attend this meeting.

US 80: INTERSECTION AT BELLEVUE RD

Stage 0 Public Meeting

March 31, 2022

State Project No. H.014044.1

Federal Aid Project No. H014044



LADOTD Project Delivery Process

Stage 0: Feasibility (Current Stage)

- Determines Feasibility of Proposed Project
- Typically 1 Year in Duration

Stage 1: Planning & Environmental

- Detailed Planning and Environmental Analysis
- Typically, 1-2 Years in Duration

Stage 2: Funding & Project Prioritization

- Funding Allocation for Design and Construction
- Indefinite Time Period

Stage 3: Final Design Process

- Development of Final Design and Specifications
- Typically 1-3 Years in Duration

Stage 4: Letting

- Bid Letting Process
- Typically 1 Year in Duration

Stage 5: Construction

- Construction of Project
- Typically 1-3 Years in Duration

Stage 6: Operation

- Post-Construction Activities
- Indefinite Time Period

Welcome to the Meeting

Welcome to the public meeting for US 80: Intersection at Bellevue Rd project located in Red Chute, Bossier Parish. This meeting is a critical part of the project planning process, and we are grateful for your participation. This handout will provide key information about the project and how you can participate in the development of the alternatives. The back of this handout outlines the information stations. We welcome you to participate by visiting these stations during the meeting. Please sign-in at our welcome station, view our PowerPoint presentation and the project exhibits. If you have right-of-way questions, you can visit the right-of-way station. Once you have visited these stations, please provide your comments at the comment station, utilizing the comment form in this handout.

Project Purpose

The purpose of this study is to identify alternatives that improve safety (reduce crashes) along US 80 while maintaining mobility for motorists, pedestrians, and bicyclists.

Meeting Purpose

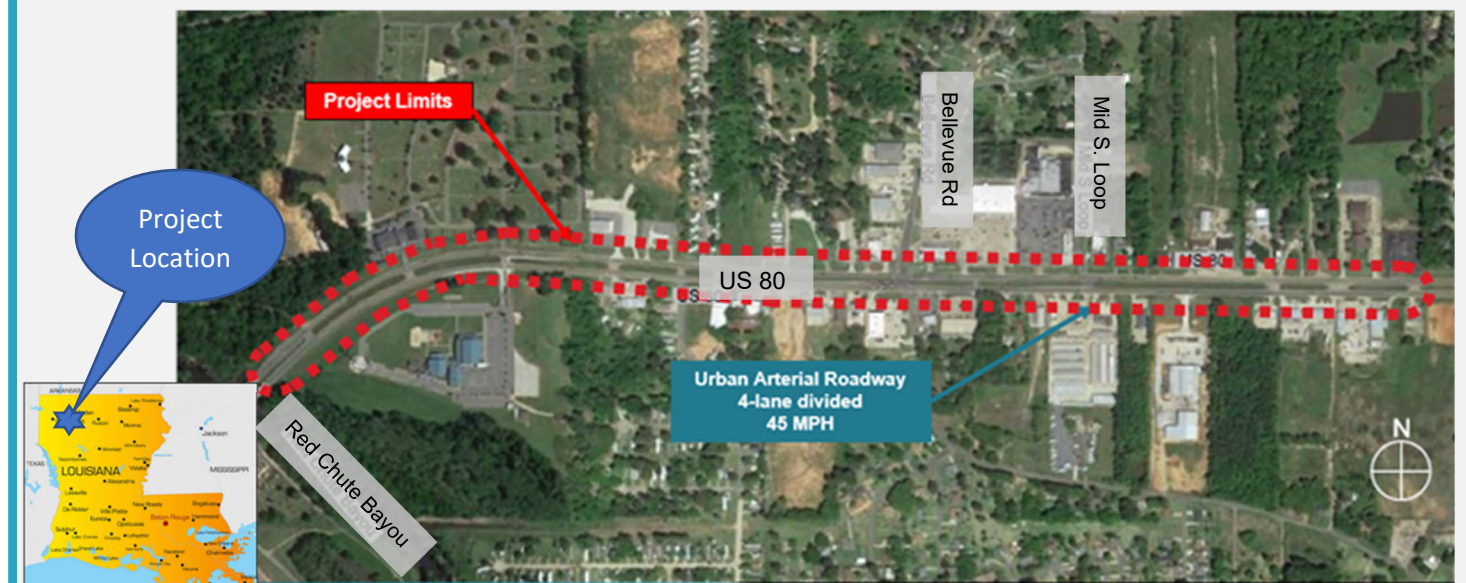
- Provide information about the findings of the study.
- Provide information about the proposed project alternatives.
- Solicit comments about the project and the alternatives.

Project Description

The proposed project is located in Bossier Parish along US 80 between Red Chute Bayou and Country Lane. The existing US 80 is a four lane median divided urban arterial roadway with a posted speed of 45MPH. This project will provide improvements in safety and mobility within this segment of the US 80 corridor. The improvements included in this study include intersection improvements and median modifications.

Project Tasks Completed

- Traffic Study & Safety Analysis
- Two (2) Alternatives Developed
- Determine Potential Impacts
- Estimated Construction Costs



Two Alternatives Developed

As part of this study, a traffic analysis and safety analysis were completed. Based on the results of the analyses, two alternatives were developed to improve safety and operations. Both alternatives show identical improvements along US 80 and include directional U-turns along US 80 and removed direct access at Mid South Loop. These two alternatives differ only by the proposed improvements at Bellevue Road.

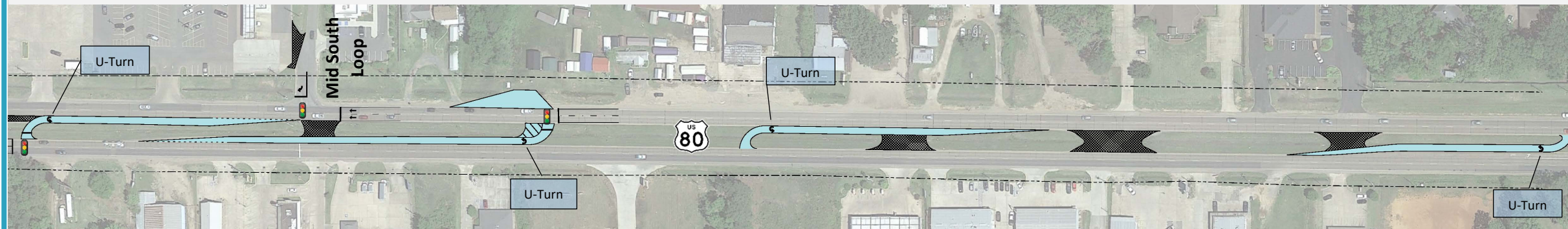
Alternative 1 and Alternative 2 along US 80

(From beginning of the Project to Bellevue Rd.)



Alternative 1 and Alternative 2 along US 80

(Bellevue Rd. to project end)



Alternative 1 creates a Restricted Crossing U-Turn (RCUT) at the intersection and Alternative 2 adds additional lanes to the side streets at the intersection of US 80 and Bellevue Road. The alternatives are shown in more detail in the project layout. Project benefits for the two alternatives include savings associated with reductions in vehicle delay, queue and the reduction of crashes.

Alternative Comparison Matrix

Evaluation Criteria	Alternative 1	Alternative 2
Impact to Residence(s)	No	No
Impact to Business(es)	Yes	Yes
Impact to Potential Jurisdictional Wetlands	No	No
Impact to Significant Tree(s)	No	No
Impact to Historical/Archeological Site(s)	No	No
Construction Cost	\$1,738,693	\$1,815,873
Utility Relocation Required	Yes	Yes
Right-of-Way Required	Yes	Yes
Purpose & Need (safety)	Met	Met
Total Project Cost	\$2,588,318	\$2,872,787

Project Benefits

Safety Benefits

- The improvements associated with each alternative over time to reduce the number and intensity of crashes along the corridor.
- Alternative 1 - 37% Reduction in the number of crashes
 - Alternative 2 - 39% Reduction in the number of crashes

Operational Benefits

- Reductions in average vehicle delay and queue length are computed for each alternative. The value of the reduced travel delay is used to measure 20-year life operations savings.
- Alternative 1 - 71% reduction in the 2039 projected vehicle delay
 - Alternative 2 - 35% reduction in the 2039 projected vehicle delay.
 - Alternative 1 - 2039 projected vehicle queue deduction of 60 - 82%
 - Alternative 2 - 2039 projected vehicle queue reduction of 5 - 74%

